



2024

## Electric vehicle tooling solutions



### GANZHOU ACHTECK TOOL TECHNOLOGY CO.,LTD.

Add: Ganzhou Economic Development Area, Jiangxi, China  
Tel: 400-9150-887 Fax: 0086-797-8166100 E-mail: marketing@achtecktool.com



### ACHTECK AMERICA, INC.

Add: 1928 Star Batt Drive, Ste C, Rochester Hills, MI 48309  
Tel: +1(947)208-7289 E-mail: zyaacs@achtecktool.com Website: www.achteckamerica.com

2024V01

[www.achteckamerica.com](http://www.achteckamerica.com)



## Company Profile

Ganzhou Achteck Tool Technology Co., Ltd. is a wholly-owned subsidiary of Chongyi Zhangyuan Tungsten Co., Ltd. (Listed Company with stock code 002378). The registered capital of Achteck is 1.66 billion USD with 800 employees. The main products include: Coated Carbide Inserts, Carbide Rod and supporting tool holders. Achteck is known for its outstanding R&D competence, production & testing equipment and its coated carbide insert production technology.

Achteck produces inserts for Turning, Grooving, Milling and Drilling that are widely applied in automotive, energy, die & mold, general machinery, aerospace and other industries. Achteck Tool is technology oriented, owns a strong research team that keeps on innovating. Having "Benefits from Resources, Reliance on Technologies, Devotion to Humanity and Top with Trust" as the operating philosophy and "Safety, Harmony, Efficiency and Innovation" as the target, Achteck aims to become a well-known brand in the world and a first-class cemented carbide manufacturer in China.



## Contents:

Motor housing .....	1-4
Decelator housing .....	5-6
Vortex part .....	7-8
Battery chassis .....	9-10

• Motor housing  
Material: Aluminum alloy

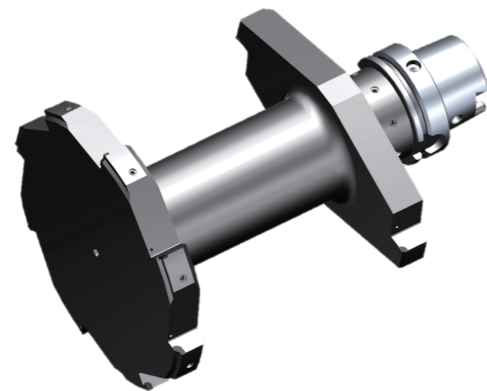
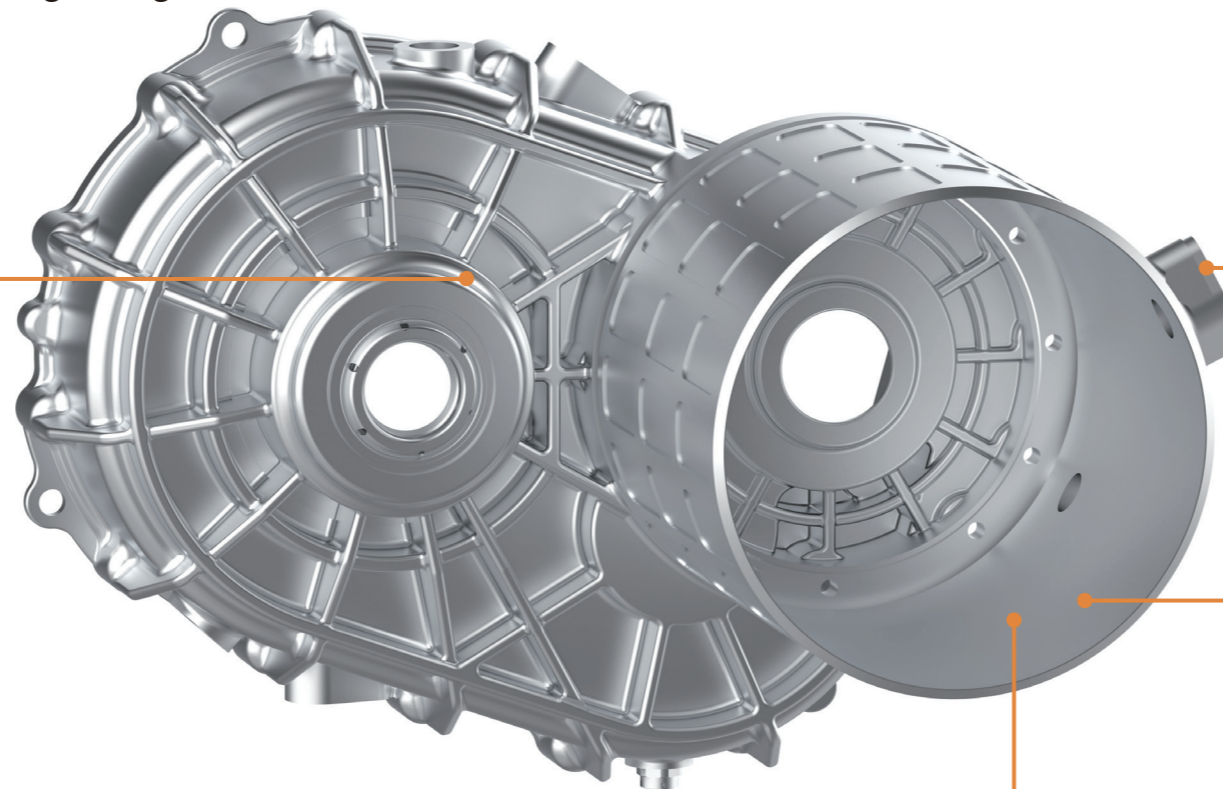


Application: Stator hole roughing  
Solution: Achteck brazed PCD porcupine milling cutter

- Provide special design
- Cross-tooth design, more efficient
- Eliminated vibration and high stability in thin-walled machining, with sharp cutting edge and grade PD10

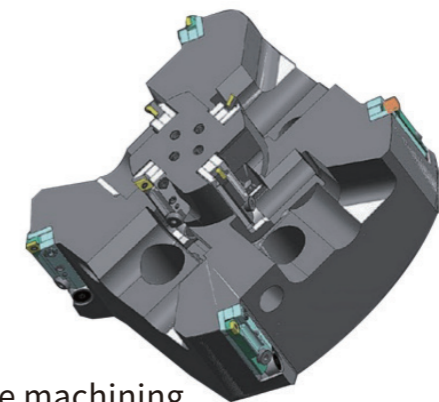
Application : Installation surface machining  
Solution: M245 Solid carbide end mill

- Tool diameter: 3~20mm
- Variable helix angle and differential pitch design
- Excellent vibration resistance performance for high surface quality
- Optional diamond coating improves wear resistance



Application: Stator hole machining  
Solution: Achteck brazed PCD tool

- Provide special design
- High stability and compact structure design ensure the rigidity of the tool while minimizing the weight of the tool
- Easy to handle, no need to adjust



Application: Stator hole machining  
Solution: Boring tool

- Provide special design
- The stator hole and bearing hole are machined at the same time with higher precision
- Light weight design
- Adjustable cartridges for easy handling

• Motor housing  
Material: Aluminum alloy



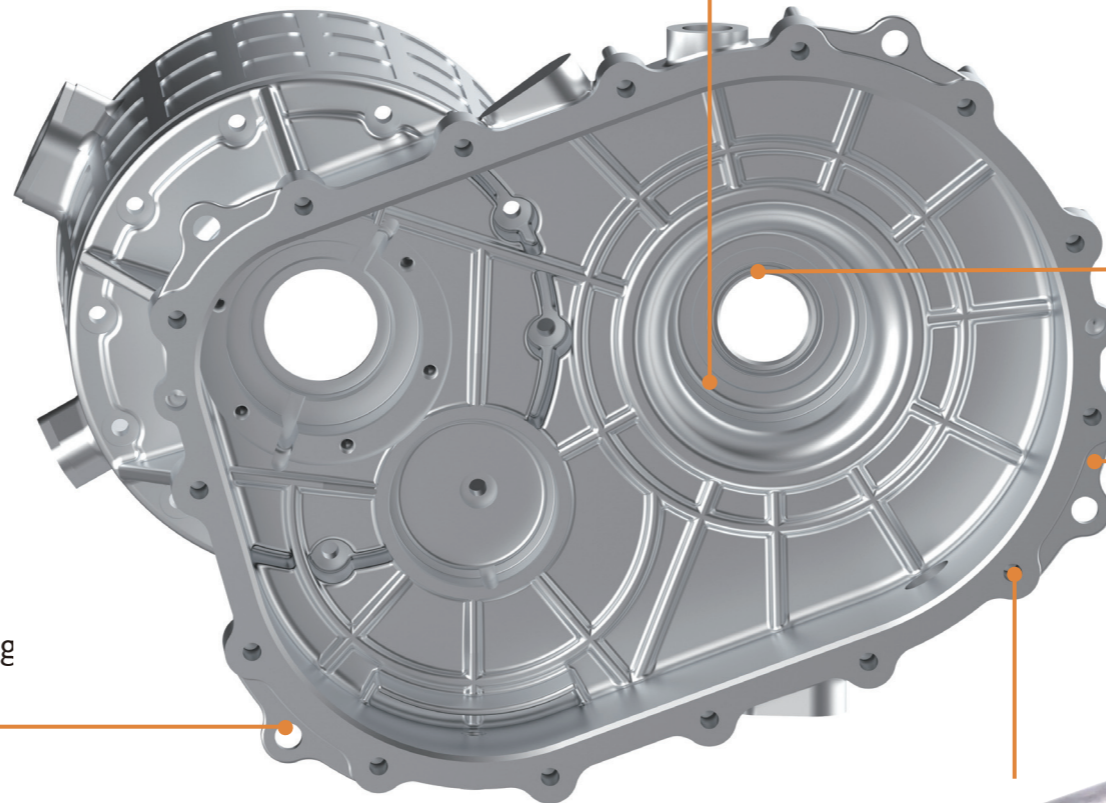
Application: Bearing hole rough boring  
Solution: Special tool

- Provide special design
- ISO standard insert for reduced cost
- Easy to adjust and index



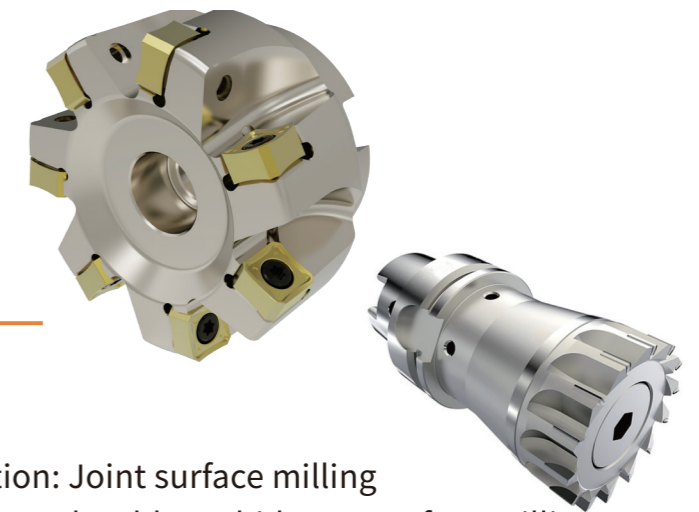
Application: Bearing hole finish boring  
Solution: Finishing boring bar

- High stability and compact structure design ensure the rigidity of the tool while minimizing the weight of the tool
- With precision adjustment to realize the rapid adjustment of dimension
- Balanced wear resistance and toughness, excellent precision of PCD inserts



Application: Pin hole and positioning hole reaming  
Solution: PCD reamer

- Tool diameter 4~20mm, cutting edges 2~6
- Used carbide bar to ensure the rigidity of the tool
- Balanced wear resistance and toughness for long tool life with PD20 grade and special cutting edge design



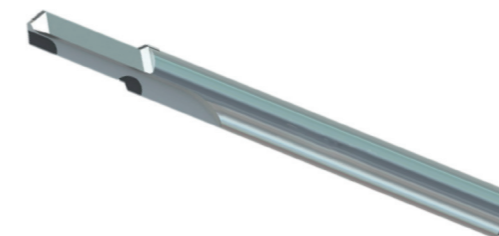
Application: Joint surface milling  
Solution: Indexable carbide or PCD face milling cutter

- Provide special design for brazed PCD face milling cutter
- Provide grinding services to ensure product quality, highly economical
- S-type insert with eight cutting edges, with grade AW100K for aluminum alloys, high efficiency and low cost



Application: thread hole drilling  
Solution: Step drilling

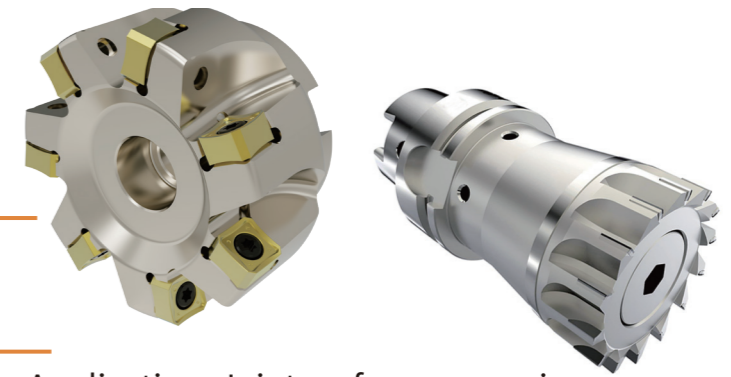
- Provide special design
- Option: solid carbide and brazed PCD
- Used self-developed precision rod
- High wear resistance for better tool life



• Decelator housing  
Material: Aluminum alloy



- Application: Face milling  
Solution: AHM15 high feed milling cutter series
- Cutter diameter: 32mm-125mm
  - Double positive rake angle design, light cutting
  - Highly economical: 4 cutting edges
  - High feed, more than 5 times of the common milling cutter, for higher efficiency
  - With large arc edge, smooth and light cutting



Application: Joint surface processing  
Solution: Indexable carbide or PCD face milling cutter

- Provide special design for brazed PCD face milling cutter
- Provide grinding services to ensure product quality; highly economical
- S-type insert, with 8 cutting edges, with grade AW100K for aluminum alloys, high efficiency and low cost



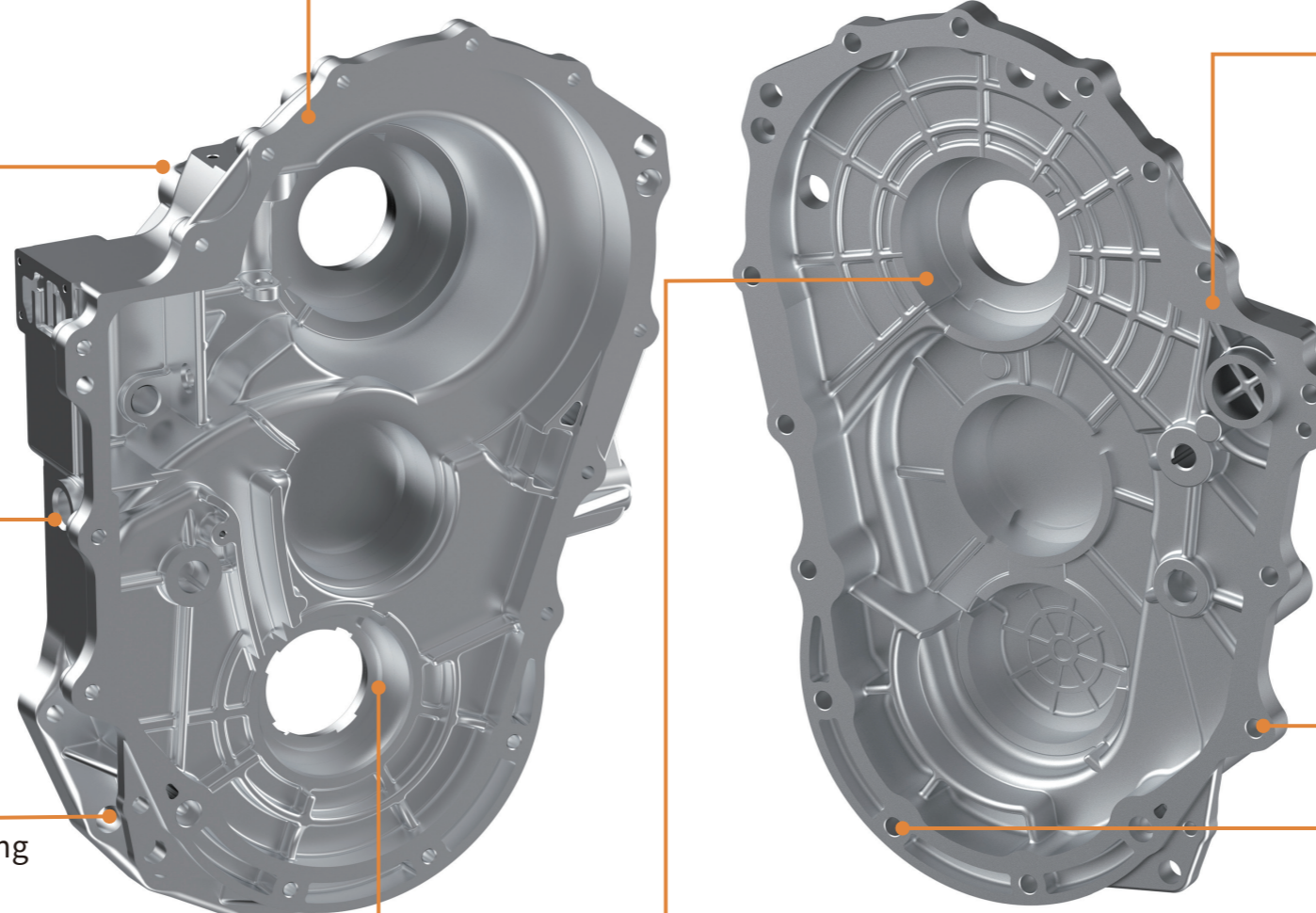
Application: Pin hole and positioning hole machining  
Solution: PCD reamer

- Tool diameter 4~20mm, cutting edges 2~6
- The carbide shank ensures the tool rigidity
- Balanced wear resistance and toughness for long tool life with PD20 grade and special cutting edges design



Application: Peripheral hole drilling  
Solution: Step drilling

- Provide special design
- Option: solid carbide and brazed PCD
- Used self-developed precision rod
- High wear resistance for long tool life



Application: Bearing hole boring  
Solution: Boring bar

- High stability and compact structure design ensures the tool rigidity and reduces the weight of the tool
- Adjustable cartridges, standard insert design, good versatility and low cost

- Vortex part  
Material: Aluminum alloy



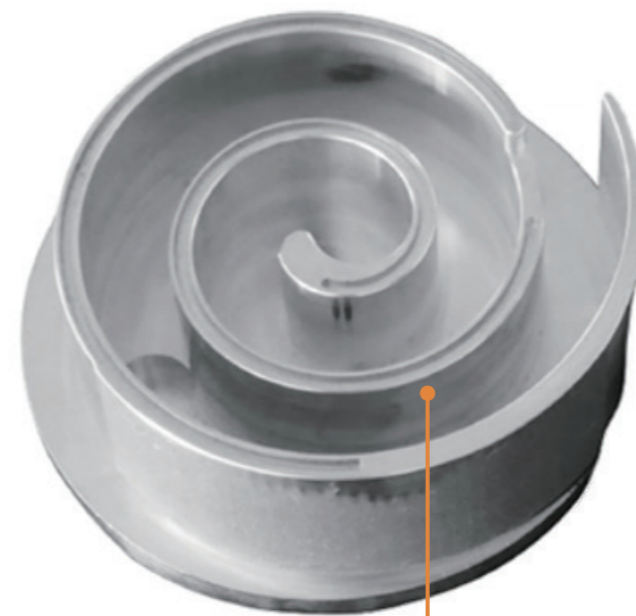
M245 Solid carbide end mills

- Tool diameter: 3~20mm
- Variable helix angle and differential pitch design
- Excellent vibration resistance for good surface quality



Step drilling

- Provide special size design
- Option: solid carbide and brazed PCD
- Used self-developed precision rod
- High wear resistance for long tool life



PCD milling cutter

- Provide special design
- Coarse or close pitch for different conditions
- Low vibration and high stability in milling thin-walled workpiece , with sharp cutting edge and grade PD10

• Battery chassis  
Material: Aluminum alloy

Application: Housing surface milling  
Solution: Brazed PCD and indexable PCD milling cutter

- Provide special design
- Close pitch design, high efficiency and good surface quality
- Multi-functional face milling cutter for various applications
- Provide grinding services to ensure product quality , highly economical



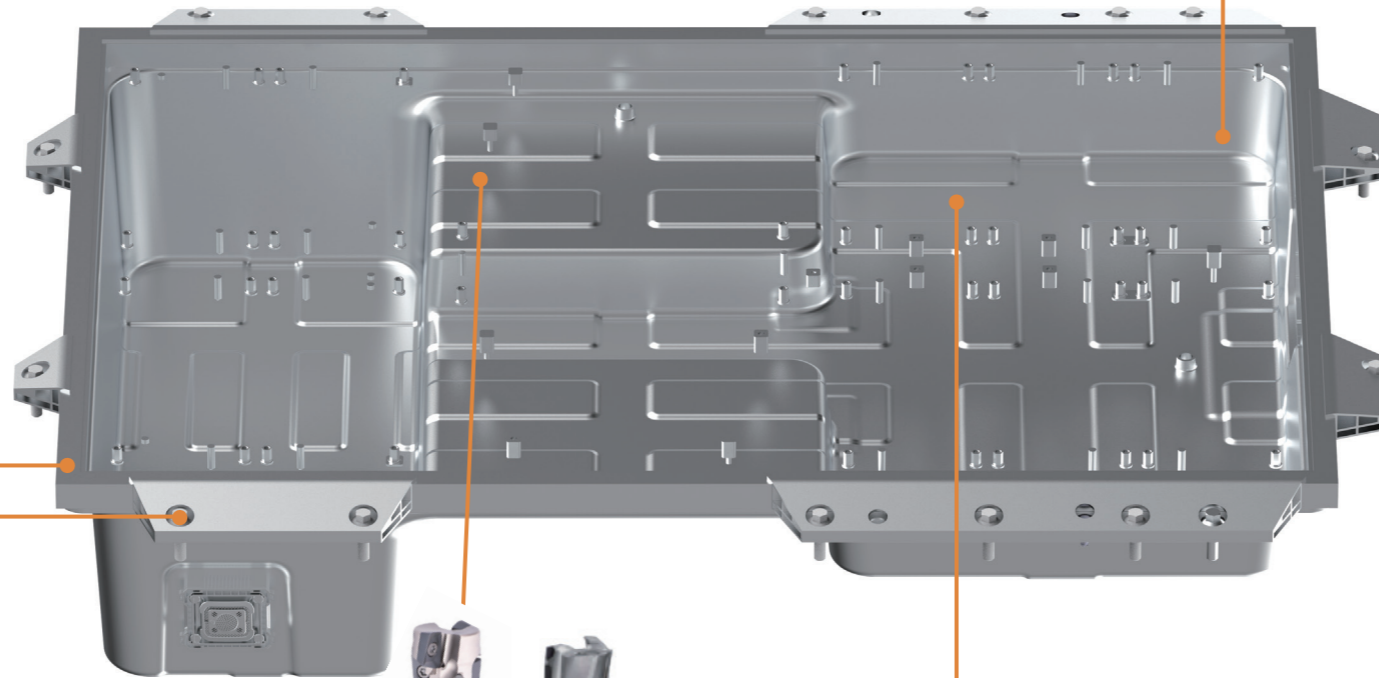
Application: Side wall finishing  
Solution: M245 Solid carbide end mills

- Tool diameter: 3~20mm
- Variable helix angle and differential pitch design
- Excellent vibration resistance for good surface finish
- Optional diamond coating improves wear resistance

Application: Hole machining

Solution: Step drilling

- Provide special design
- Option: solid carbide and brazed PCD
- Used self-developed precision rod
- High wear resistance for long tool life



Application: Side wall rough milling

Solution: porcupine milling cutter

- Option: APE90 porcupine milling cutter series and brazed PCD cutter
- AW100K for aluminum alloy, high efficiency and low cost
- Low vibration and high stability in milling thin-walled workpiece , with sharp cutting edge and grade PD10

Application: Side wall finishing  
Solution: PCD milling cutter

- Provide special size design
- Coarse or close pitch for different applications
- Low vibration and high stability in milling thin-walled workpieces, with sharp cutting edges and grade PD10



