



// 2024

Medical instrument machining solutions



GANZHOU ACHTECK TOOL TECHNOLOGY CO.,LTD.

Add: Ganzhou Economic Development Area, Jiangxi, China
Tel: 400-9150-887 Fax: 0086-797-8166100 E-mail: marketing@achtecktool.com

ACHTECK AMERICA, INC.

Add: 1928 Star Batt Drive, Ste C, Rochester Hills, MI 48309
Tel: +1(947)208-7289 E-mail: zyaacs@achtecktool.com Website: www.achteckamerica.com



2024V01



www.achteckamerica.com



Company Profile

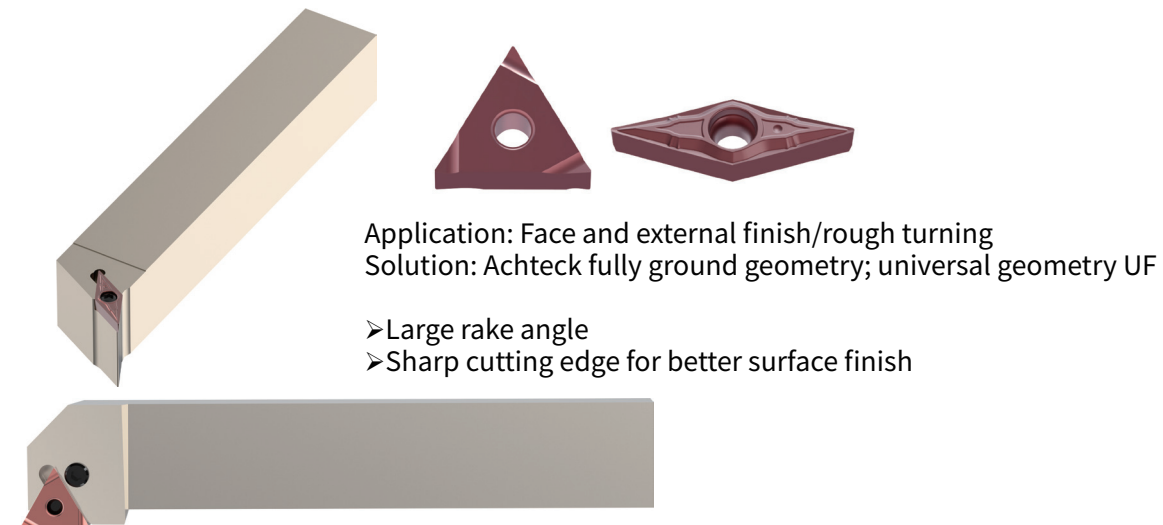
Ganzhou Achteck Tool Technology Co., Ltd. is a wholly-owned subsidiary of Chongyi Zhangyuan Tungsten Co., Ltd. (Listed Company with stock code 002378). The registered capital of Achteck is 1.66 billion USD with 800 employees. The main products include: Coated Carbide Inserts, Carbide Rod and supporting tool holders. Achteck is known for its outstanding R&D competence, production & testing equipment and its coated carbide insert production technology. Achteck produces inserts for Turning, Grooving, Milling and Drilling that are widely applied in automotive, energy, die & mold, general machinery, aerospace and other industries. Achteck Tool is technology oriented, owns a strong research team that keeps on innovating. Having "Benefits from Resources, Reliance on Technologies, Devotion to Humanity and Top with Trust" as the operating philosophy and "Safety, Harmony, Efficiency and Innovation" as the target, Achteck aims to become a well-known brand in the world and a first-class cemented carbide manufacturer in China.



Contents:

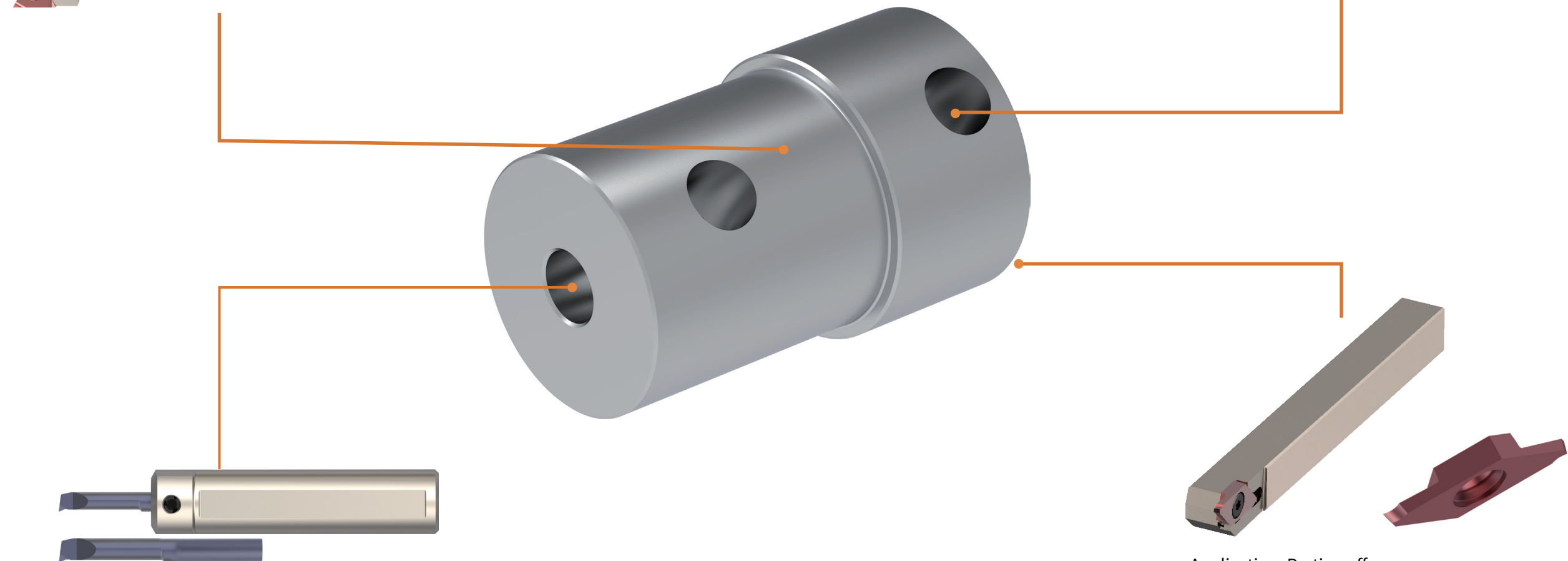
Pacemaker accessories 1	1-2
Orthopedic-trauma-bone plate	3-4
Orthopedic-trauma-bone screw	5-6
Orthopedic-cervical vertebrae-pedicle screw dovetail head	7-8
Orthopedic-cervical vertebrae-nut	9-10
Orthopedic-joint-acetabular cup	11-12
Orthopedic-joint-femoral cap	13-14
Orthopedic-joint-femoral stem	15-16
Orthopedic-joint-femoral parts	17-18
Orthopedic-joint-tibial bracket	19-20

- Pacemaker accessories
Material: Stainless steel, Titanium alloy



Application: Drilling
Solution: Achteck solid carbide D151 series with internal coolant

- Sharp edge to ensure efficient drilling
- The designed profile and polished chip work together for excellent chip removal



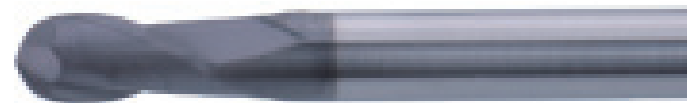
Application: Small diameter boring
Solution: Achteck solid ASI tool series

- Minimum machining diameter: 0.3mm
- Oval-shaped body design for better rigidity

Application: Parting off
Solution: Achteck parting off insert ASWP 09/10...

- Max. diameter for parting off: 16mm
- Fully ground profile for higher positioning precision

- Orthopedic-traumas-bone plate
Material: Titanium alloy



Application: Slope milling and chamfer milling
Solution: Solid carbide ball-nose mill M210 series

- The new substrate grade AK12U for good versatility



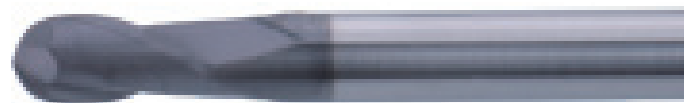
Application: Drilling
Solution: Solid carbide drill D151 series with internal coolant

- Sharp edge to ensure efficient drilling
- The designed profile and polished chip flute work together for excellent chip removal



Application: Hole and slot milling rough and finish
Solution: Solid carbide end mill M150 series for titanium alloy milling

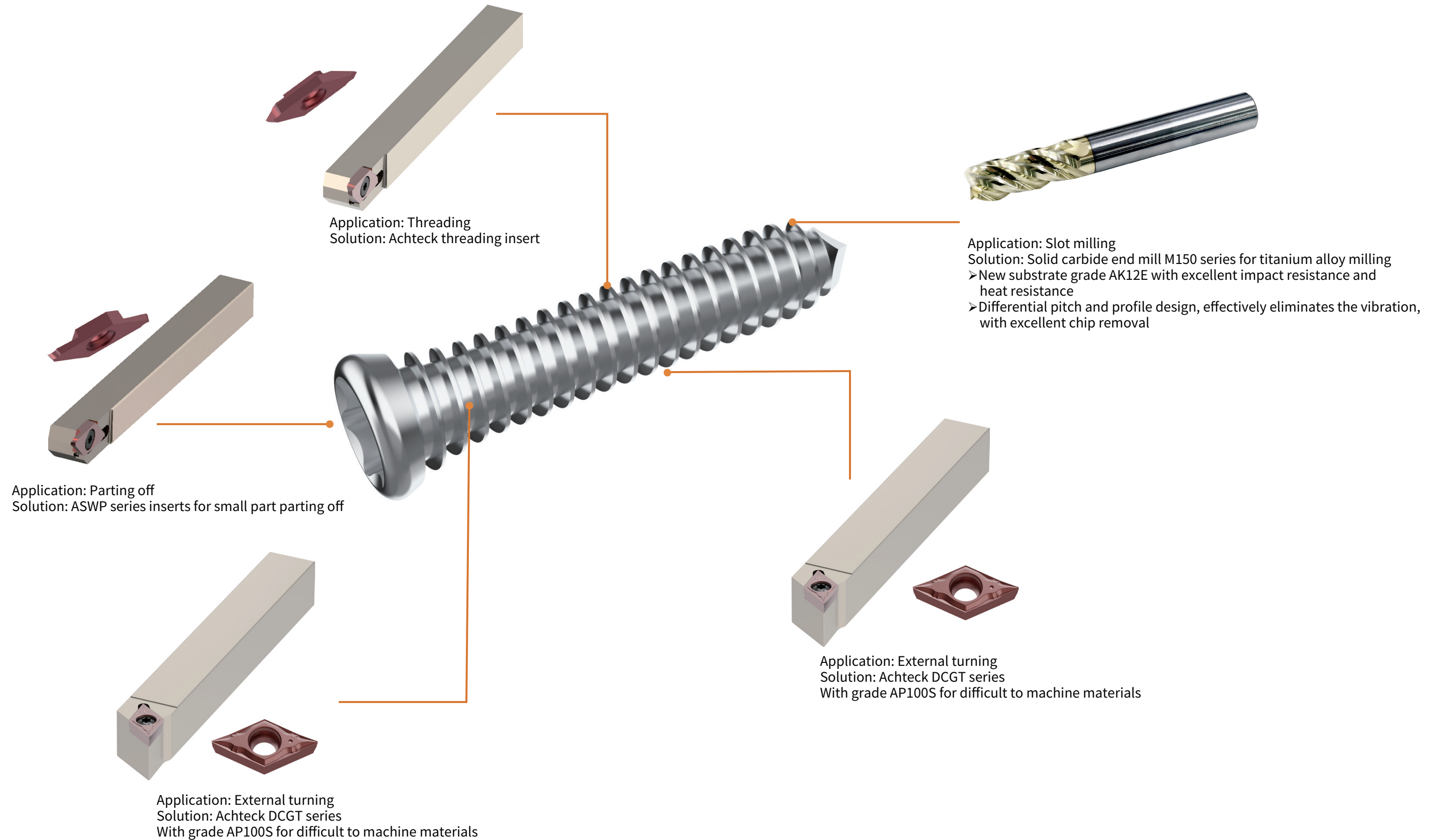
- New substrate grade AK12E with excellent impact resistance and heat resistance
- Differential pitch and profile design, effectively eliminates the vibration, with excellent chip removal



Application: Hole chamfering milling
Solid carbide ball-nose end mill M210 series

- The new substrate grade AK12U for good machining versatility

- Orthopedic-traumas-bone screw
Material: Titanium alloy



- Orthopedic-cervical vertebra-pedicle screw dovetail head
Material: Titanium alloy



Application: Slot milling
Solution: Solid carbide end mill M150 series for titanium alloy milling

- New substrate grade AK12E with excellent impact resistance and heat resistance
- Differential pitch and profile design, effectively eliminates the vibration, with excellent chip removal



Application: Side hole milling
Solution: Solid carbide end mill M150 series for titanium alloy milling

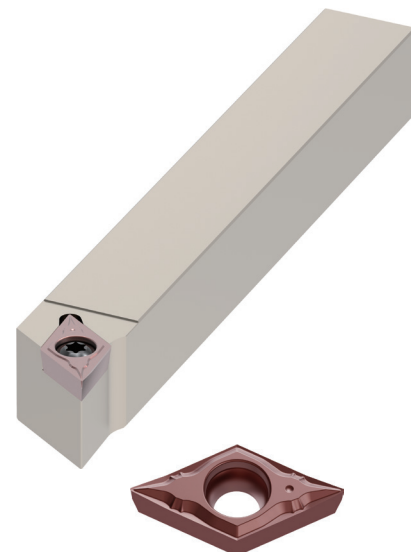
- New grade AK12E with excellent impact resistance and heat resistance
- Differential pitch and profile design, effectively eliminates the vibration, with excellent chip removal



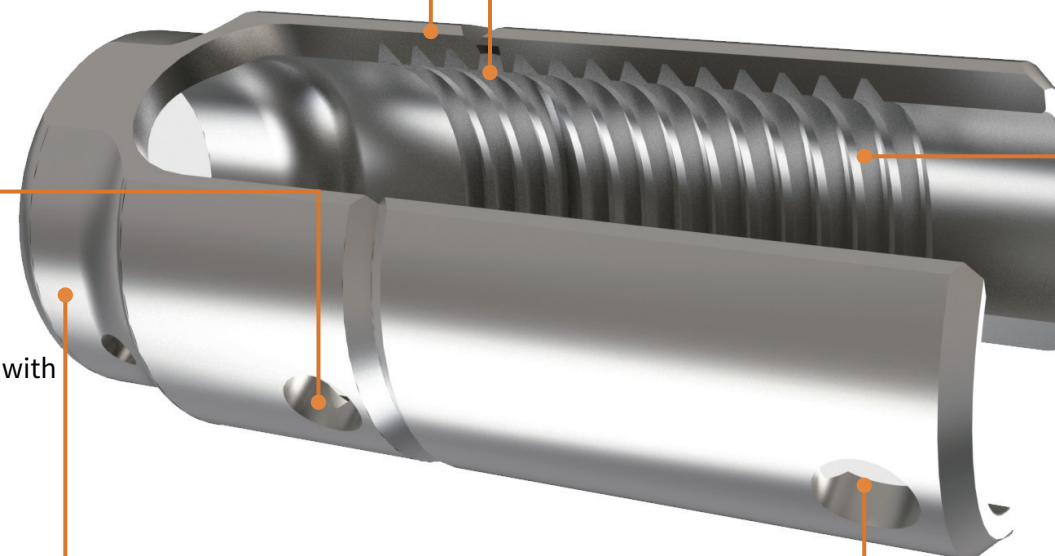
Application: Internal grooving
Solution: Achteck solid internal grooving tool



Application: Internal grooving and threading
Solution: Achteck solid internal boring tool, solid threading tool



Application: External turning
Solution: Achteck DCGT series
With grade AP100S for difficult to machine materials

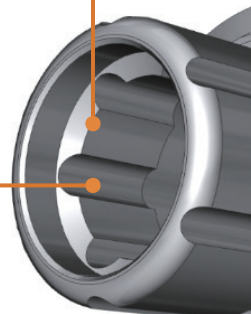


Application: centre hole drilling
Solution: Solid carbide drill D151 series with internal coolant

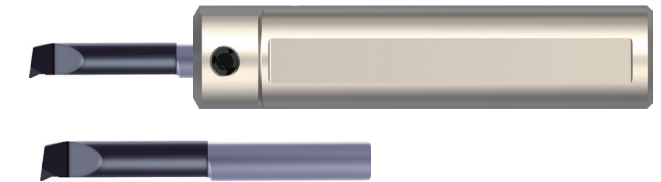
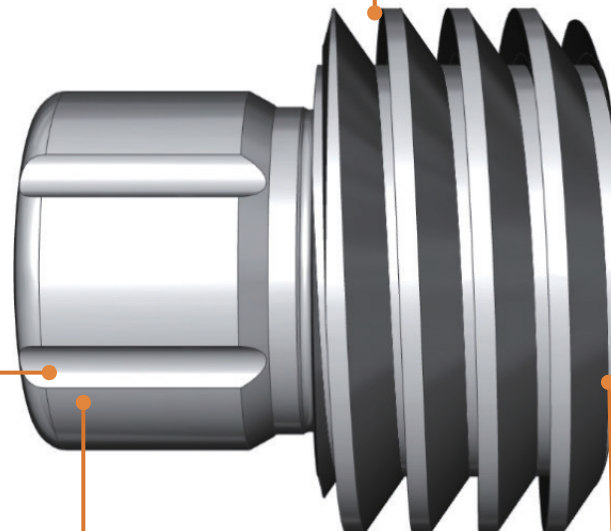
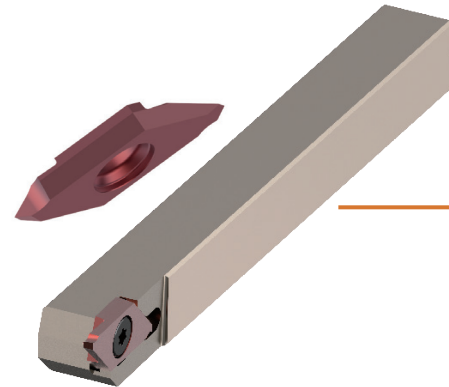
- Sharp edge to ensure efficient drilling
- The designed profile and polished chip flute work together for excellent chip removal

- Orthopedic-cervical vertebrae-nut
Material: Titanium alloy

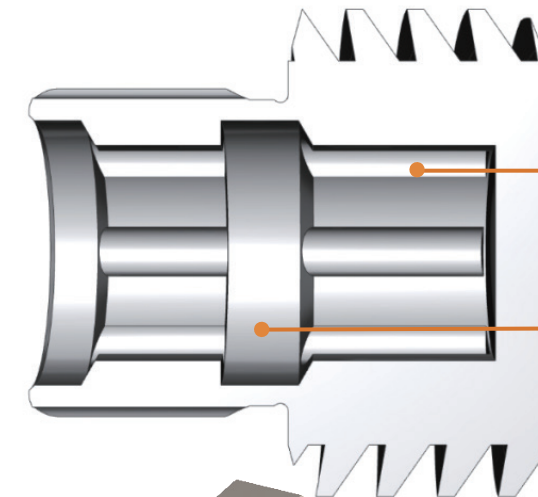
Application: Center hole drilling
Solution: Achteck special step drill



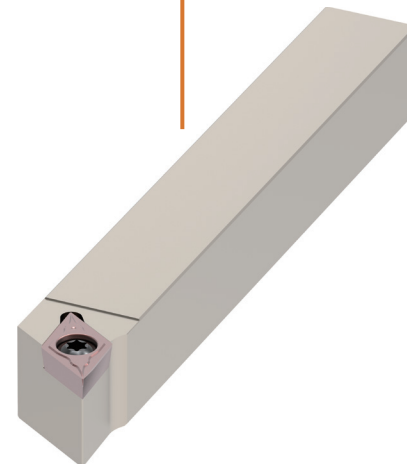
Application: Threading
Solution: Achteck threading insert



Application: Boring
Solution: Achteck solid boring tool

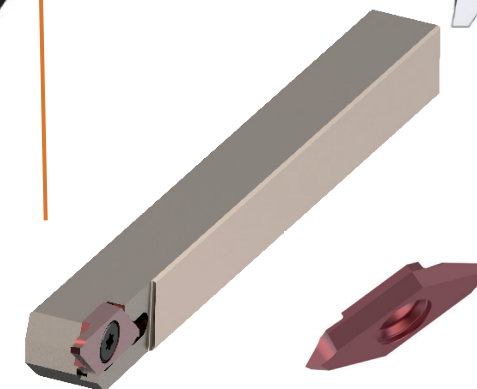
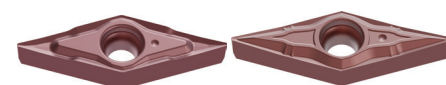


Application: Internal and external plum slot milling
Solution: Achteck cobalt-chromium-molybdenum end mill



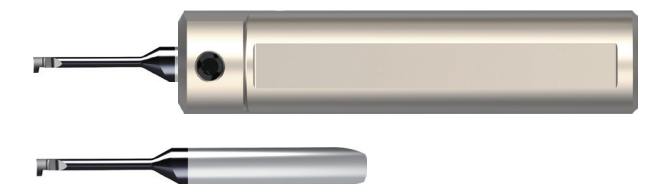
Application: External turning
Solution: Achteck DC, VC series

➤ With grade AP100S for difficult to machine materials



Application: Parting off
Solution: Achteck parting off insert ASWP 09/10...

➤ Max. diameter for parting off: 16mm
➤ Fully ground profile for higher positioning precision



Application: Internal grooving
Solution: Achteck solid internal grooving tool

- Orthopedic-joint-acetabular cup
Material: Titanium alloy/ CoCrMo



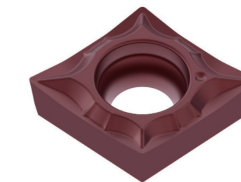
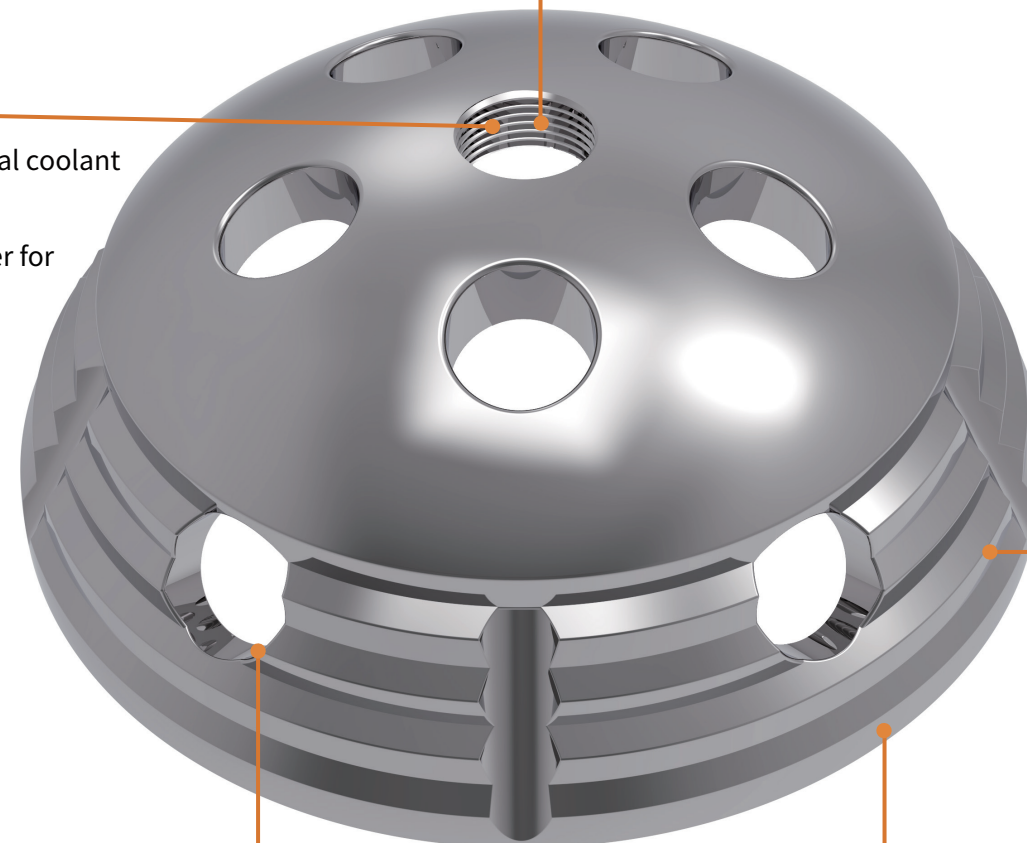
Application: Tapping
Solution: Achteck tap

- High efficiency, quality and stability in tapping
- Suitable for P, K, M, S materials



Application: Drilling
Solution: Achteck solid carbide drill D151 series with internal coolant

- Sharp edge to ensure efficient drilling
- The designed profile and polished chip flute work together for excellent chip removal



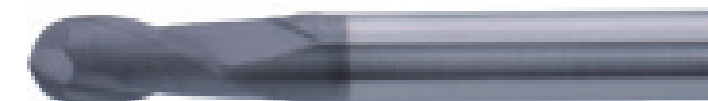
Application: External rough turning
Solution: Achteck C-shaped insert

- With grade AP100S for difficult to machine materials
- Various geometries for P, M, S materials



Application: Drilling
Solution: Achteck solid carbide drill D151 series with internal coolant

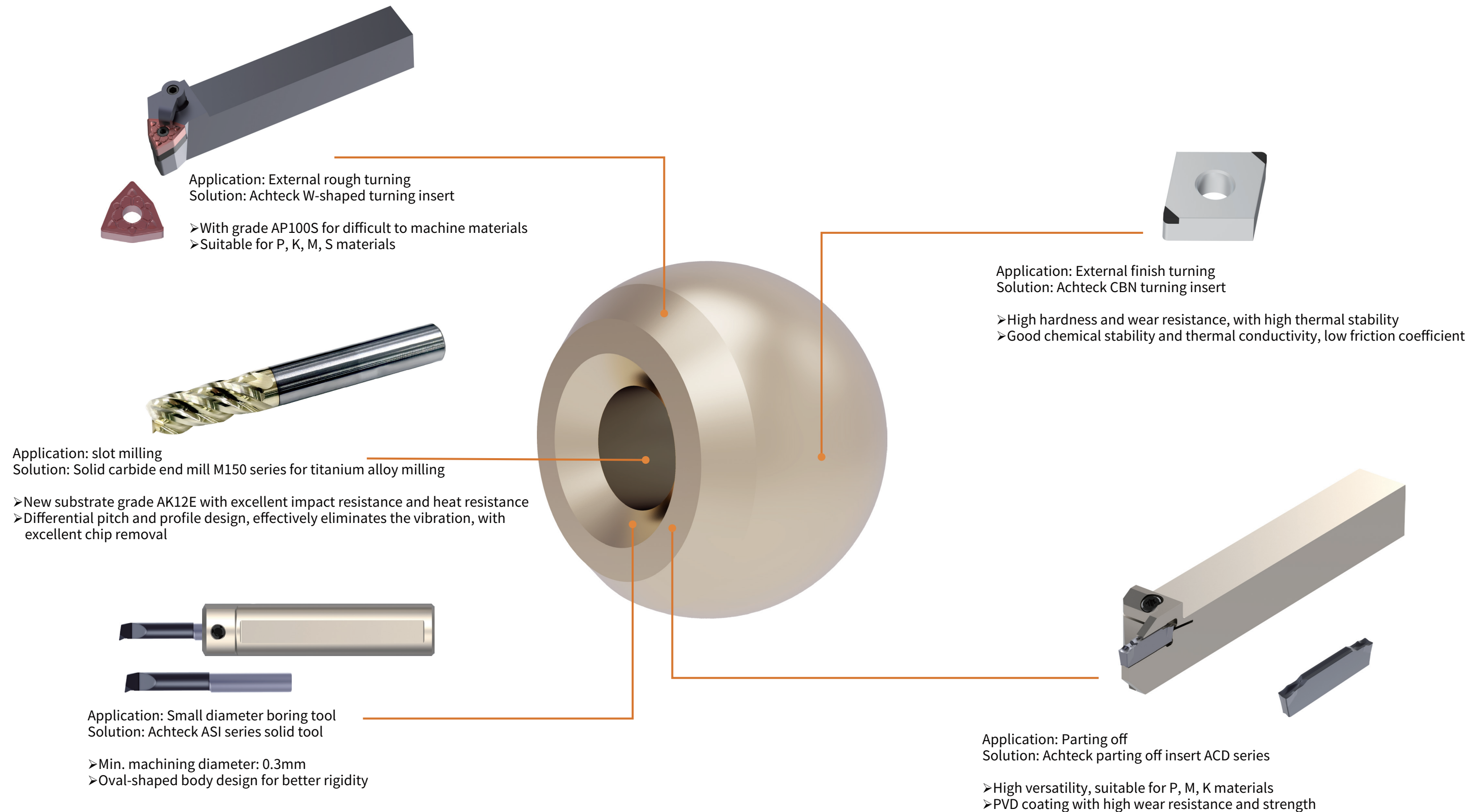
- Sharp edge to ensure efficient drilling
- The designed profile and polished chip flute work together for excellent chip removal



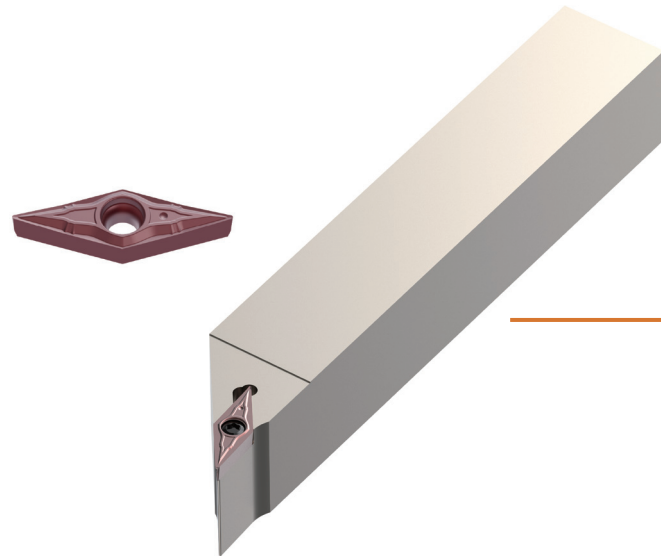
Application: Profile milling
Solution: Achteck solid carbide ball-nose mill M210 series

- The new substrate grade AK12U for good versatility

• Orthopedic-joint-femoral cap
Material: Titanium alloy/ CoCrMo

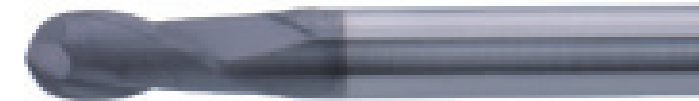


• Orthopedic-joint-femoral stem
Material: Titanium alloy/ CoCrMo



Application: External finish turning
Solution: Achteck V shaped turning insert in G class

- With grade AP100S for difficult to machine materials
- Turning insert in G class for high precision



Application: Profile milling
Solution: Achteck solid carbide ball-nose mill M210 series

- The new substrate grade AK12U for good versatility



Application: Drilling
Solution: Solid carbide drill D151 series with internal coolant

- Sharp edge to ensure efficient drilling
- The designed profile and polished chip flute work together for excellent chip removal



Application: Tapping
Solution: Achteck Tap

- High efficiency, quality and stability in tapping
- Suitable for P, K, M, S materials

• Orthopedic-joint-femoral parts
Material: Titanium alloy/ CoCrMo



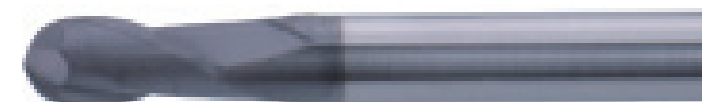
Application: Internal finish machining
Solution: Achteck special tapered ball nose end mill



Application: Profile rough milling
Solution: Achteck solid carbide end mill with high performance
➤ Waved-edge geometry, good chip breaking effect, for large cutting depth



Application: External profile milling
Solution: Achteck solid carbide end mill M205 series
➤ The new substrate grade AK12U for good versatility
➤ Large spiral angle and multi-tooth design, for semi-finish and finish milling



Application: profile milling
Solution: Solid carbide ball-nose mill M210 series
➤ The new substrate grade AK12U for good versatility



• Orthopedic-joint-tibial bracket
Material: Titanium alloy/ CoCrMo



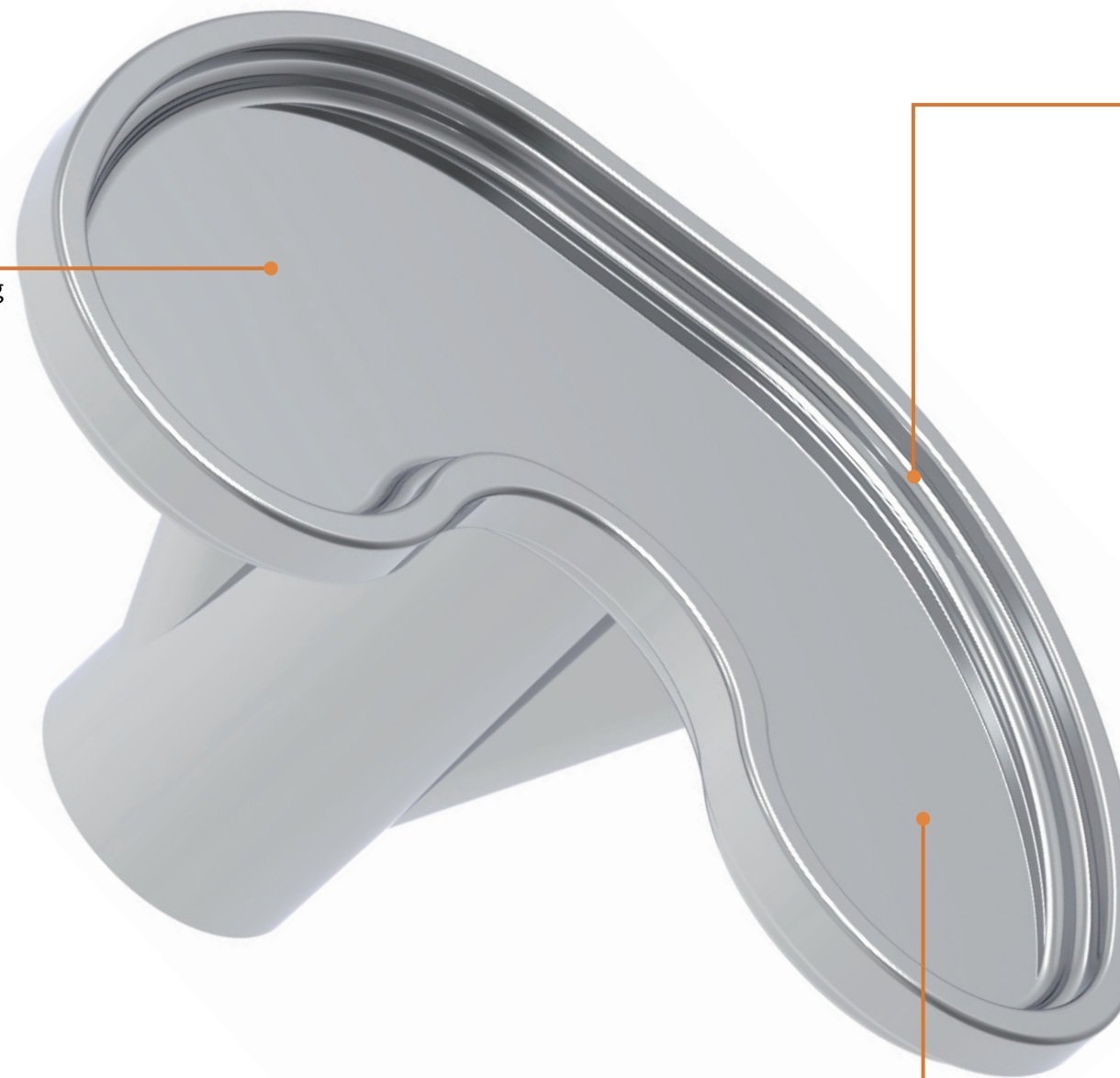
Application: Bottom face rough milling
Solution: Solid carbide end mill M150 series for titanium alloy milling

- New substrate grade AK12E with excellent impact resistance and heat resistance
- Differential pitch and profile design, effectively eliminates the vibration, with excellent chip removal



Application: chamfer milling
Solution: Solid carbide chamfer mill M180 series

- Optional two chamfering angles of 90° and 120°
- For various chamfering applications



Application: finish milling
Solution: Solid carbide end mill M150 series for titanium alloy milling

- New substrate grade AK12E with excellent impact resistance and heat resistance
- Differential pitch and profile design, effectively eliminate the vibration, with excellent chip removal

